



珠海米云新能源科技有限公司

Zhuhai Miyun New Energy Technologuy Ltd., Co.

地址：广东省珠海市高新区科技6路15号

Add: 15 Keji 6 Road, Tangjia High-tech Zone,
Zhuhai, GuangDong, 519085 P. R. China



Tel: +86 756 8817236

Email: zhuhai_miyun@163.com

Web: www.miyun-net.com

Tel: +86 139 2808 0068

Email: zhuhai_miyun@163.com

Web: www.miyun-net.com

珠海米云新能源科技有限公司

Zhuhai Miyun New Energy Technology Ltd., Co.

安全 · 智能 · 高效 · 便捷 · 绿色

Charging The World

充电设备产品手册

Product Manual

目 录

Contents

公司简介 ————— 03

Enterprise Introduction

产品介绍 ————— 10

Products Features

解决方案 ————— 35

Solutions

项目案例 ————— 39

Project Cases



米云充电 | 桩联世界 | 品质首选

MIYUN·CHARGING THE WORLD

公司简介

珠海米云新能源科技有限公司成立于2018年3月，是一家专注于新能源充电设施技术研发、产品生产与销售、充电运营管理系统技术研发以及实体超级充电场站运营的国家级高新技术企业，同时是粤港澳大湾区最早开展新能源电动汽车充电桩研发、生产及销售的企业之一。多年以来，公司旗下“米云充电”品牌以其良好的经营业绩及服务品牌，备受广东省及澳门特区政府高度赞扬及粤港澳三地新能源汽车用户喜爱。米云新能源在珠海市高新区自建交流及直流充电桩生产厂房，产品销往国内超过26个省份；海外市场分布超过24个国家及地区，旗下产品系列能同时满足国标及欧盟标准。

“米云充电”以约100座平均功率为200kW的直流快充设备占据珠海、澳门充电服务市场60%以上市场份额，旗下充电站是全球唯一同时服务粤港澳三地新能源电动汽车的充电服务运营商。2022年6月，米云新能源通过控股项目公司在当地发改部门指导下发起成立珠海市新能源汽车充电设施协会成为创会单位、同时牵头筹备粤港澳大湾区新能源充电设施联盟；率先成为珠海市新能源产业集群“五个一”龙头培育企业、国家交通部绿色货运示范工程、广东南方电网授予“珠海市唯一电能替代示范站”、广东省出租汽车示范综合服务区（珠海唯一）。创始人肖彩雯女士荣获2022年度绿色亚太环保成就奖，被联合国环保基金会授予“杰出环保领军人物”。

2023年，公司积极拓展新的业务领域，成为集光伏、储能、充电、检测于一体的新能源设备研发、生产解决方案供应商及综合运营商，以满足日益增长的可持续能源需求，助力国家实现“双碳战略”，推动全球绿色发展。

Enterprise Introduction

Miyun is a national high-tech enterprise focusing on development, manufacture and sales of charging facilities and system, it also specialises in physical charging stations operation. Miyun has been one of the first enterprises in the Greater Bay Area to carry out new energy business. "Miyun Charging" brand under the company has been highly praised by the governments of Guangdong and Macau for its good reputation, as well as loved by growing number of users. Miyun produces AC and DC Charging station with good record of domestic and overseas sales network.

Miyun occupies over 60% of charging market share in Zhuhai and Macau. Taking the lead in becoming the "Five Ones" enterprise in the new energy industry cluster of Zhuhai, Miyun initiated Zhuhai New Energy Vehicle Charging Facilities Association in 2022. Miyun has been the Only Electric Energy Substitution Station in Zhuhai, defined by China Southern Power; its charging stations are the only stations awarded Guangdong Taxi Demonstration Comprehensive Service Zone in Zhuhai City. It's worth mentioning that Miyun's founder Ms. Xiao was awarded the Outstanding Environmental Leader by the United Nations Environmental Protection Foundation in the 2022 Green Asia Pacific Environmental Achievement Award.

From 2023 on, Miyun will make every effort in developing its business in areas integrating photovoltaic, energy storage, charging, and battery testing, helping achieve the dual carbon strategy, as well as promoting global green development.

企业优势

Enterprise Advantages



珠海米云新能源科技有限公司积极履行企业社会责任，助力国家“双碳战略”目标，推动全球绿色发展。

品质保证 Quality

远销港澳及海外国家及地区，产品质量受国内外高度认可
Highly recognised domestically and internationally

研发生产 Development & Manufacture

自建符合国际标准的生产厂房，完善的软硬件研发体系
International factory with complete and well organised systems of research, development and manufacture

运营服务 Operation & Service

立足粤港澳大湾区，面向全球，超70%珠、港、澳服务市场占有率
Owning a remarkable market share of Zhuhai, HK and Macao of exceeding 70%

智能平台 Smart Platform

自主研发智能化、数字化充电控制系统
Independently developed intelligent and digital charging control system

用户口碑 Reputaion

备受粤港澳用户喜爱
Highly favored by users from Guangdong, Hong Kong, and Macau

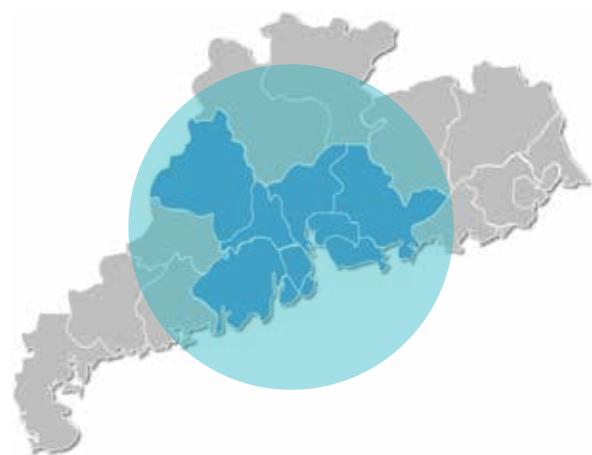
市场分布

Market Distribution

国内分布 Domestic

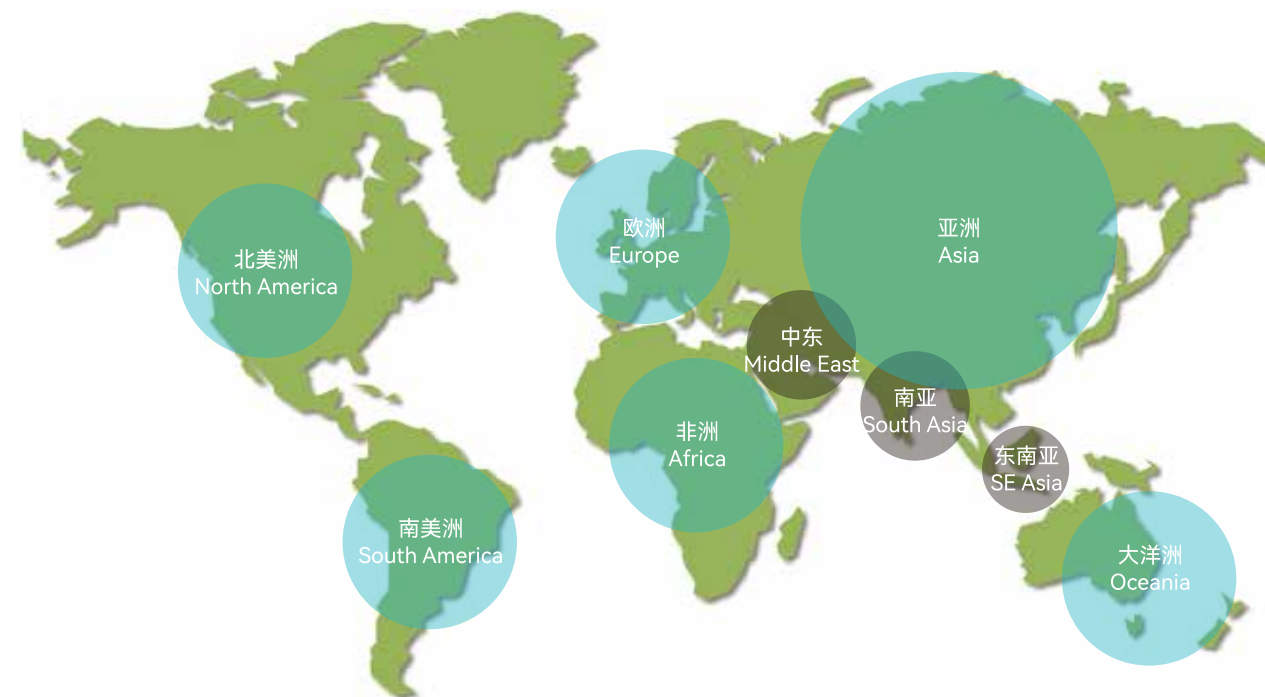


- ✓ 米云产品销往全国28个省份、直辖市
Miyun products are sold to 28 provinces and municipalities across the country



- ✓ 粤港澳大湾区9+2城市群（广州、深圳、珠海、中山、佛山、东莞、惠州、江门、肇庆、香港、澳门）
9+2 urban agglomeration in Guangdong-Hong Kong-Macao Greater Bay Area

海外分布 Overseas



- ✓ 北美市场 North America Market
加拿大、美国、墨西哥
Canada, United States, Mexico
- ✓ 南美市场 South America Market
哥伦比亚、厄瓜多尔、智利、巴西
Colombia, Ecuador, Chile, Brazil
- ✓ 非洲市场 Africa Market
尼日利亚、南非、肯尼亚
Nigeria, South Africa, Kenya
- ✓ 亚洲市场 Asian Market
俄罗斯、哈萨克斯坦、巴基斯坦、印度、印度尼西亚、马来西亚
Russia, Kazakhstan, Pakistan, India, Indonesia, Malaysia
- ✓ 欧洲市场 European Market
英国、法国、德国、西班牙、罗马尼亚、意大利
UK, France, Germany, Spain, Romania, Italy
- ✓ 中东地区 Middle East Market
伊朗、阿联酋、沙特阿拉伯
Iran, UAE, Saudi Arabia,
- ✓ 大洋洲市场 Oceania Market
澳大利亚、新西兰
Australia, New Zealand

设备生产

Production



产品介绍

Products Features

国标产品

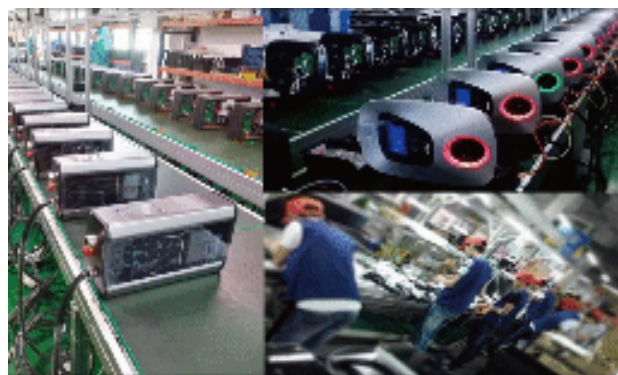
GB Series



米云总部 Miyun Headquarter

中国·广东·粤港澳大湾区，珠海市

Zhuhai City, Guangdong Hong Kong Macao Greater Bay Area, China



AC

交流充电桩生产场景

Production scenario of AC Chargers

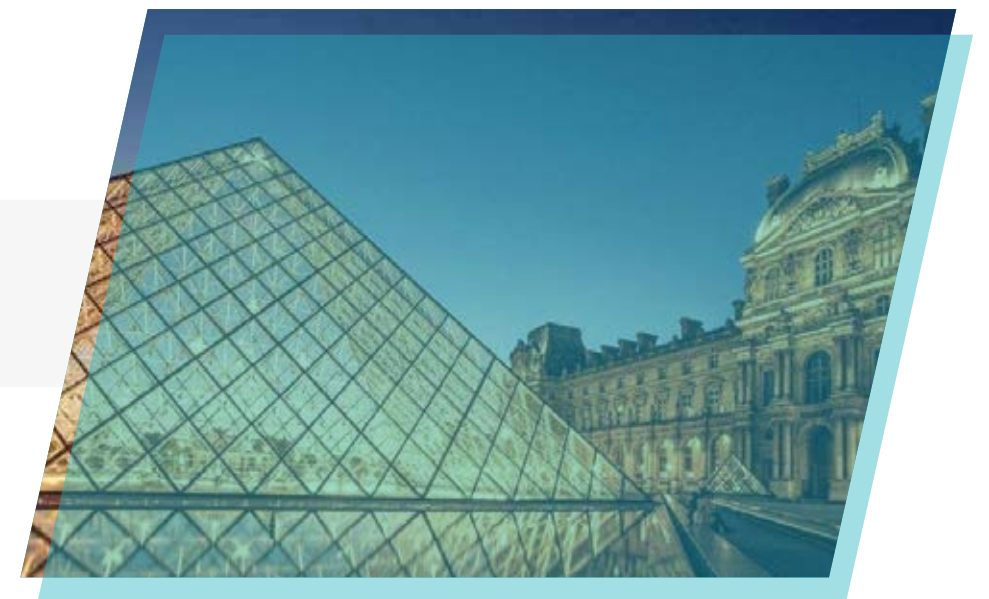
DC

直流流充电桩生产场景

Production scenario of DC Chargers

欧标产品

CE Series



✓ 米云国标PEVC2105单枪交流充电桩（3.5 - 7 kW功率等级）
Miyun PEVC2105 AC EV Charger (Single Gun, 3.5-7kW)

GB



（支持立柱安装）

基本参数 Basic parameters		
输入电压 Input Voltage	220VAC±20%(50Hz±5Hz)	
输出功率 Output Power	7kW / 3.5kW	
输出电压 Output Voltage	220VAC+20%(50Hz±5Hz)	
输出电流 Output Current	32A / 16A	
计量精度 Accuracy	1.0	
保护功能 Protection	输入过/欠压、输出过载、急停 Input over/under voltage, output overload, emergency stop	
人机交互 Interaction	4.3寸液晶屏、刷卡、手机扫码 4.3 inch LCD screen, card swiping, mobile phone code scanning	
通讯方式 Communication	以太网WiFi/4G Ethernet/WIFI/4G	
	环境参数 Environmental parameters	
工作温度 Temperature	-30℃~60℃	
海拔高度 Altitude	≤ 2000 m	
相对湿度 Relative Humidity	≤ 95%，无冷凝 non condensing	
噪音等级 Noise Level	≤ 65dB	
防护等级 Protection Grade	IP55	
参考标准 Reference Standards	GB/T 20234-2015，GB/T 18487.1-2015，NB/T 33002-2018NB/T33008.2-2018	

产品介绍 Introduction
PEVC2105是一款壳体采用全铝材质设计、表面阳极氧化处理、正面使用钢化玻璃面板装饰的简约精巧、安装便捷的新一代交流充电桩产品；集安全防护、充电控制、人机交互、通讯、计量计费于一体，性能稳定，可靠性高；防护等级为IP55，兼顾室内外环境安装使用。A simple, exquisite generation AC Charger with all aluminum shell, anodized surface, front decorated tempered glass panels and convenient installation. Integrating safety protection, charging control, human-computer interaction, communication, metering and billing, it has stable performance and high reliability. With IP55, it fits either indoor or outdoor environments.

- 产品特点 Features**
- 32位工业级处理器平台设计；计量精度1.0级 Designed by 32-bit industrial grade processor platform, accuracy level 1.0
 - 非接触式读卡器支持M1卡 Contactless card reader supports M1 cards
 - 支持扫描二维码，可远程实时监控充电状态与预约充电 Supports QR codes, remote real-time monitoring and appointment
 - 后台系统完善，可进行消费行为分析和产品故障定位等 Consumer behaviour analysing and locate product faults detecting
 - 产品具备以太网、WIFI或4G等无线通信方式与后台系统实时通讯 Ethernet/WIFI/4G real-time communication
 - 具备自检功能，故障信息以故障码的形式显示于界面并上传至后台系统 Self checking , fault codes displayed uploaded

✓ 米云PEVC2107单枪交流充电桩（3.5 - 7 kW功率等级）
Miyun PEVC2107 AC EV Charger (Single Gun)

GB



（支持立柱安装）

基本参数 Basic parameters	
输入电压 Input Voltage	220VAC±20%(50Hz±5Hz)
输出功率 Output Power	7kW / 3.5kW
输出电压 Output Voltage	220VAC±20%(50Hz±5Hz)
输出电流 Output Current	32A / 16A
计量精度 Accuracy	1.0
保护功能 Protection	输入过/欠压、输出过载、急停 Input over/under voltage, output overload, emergency stop
人机交互 Interaction	4.3寸液晶屏、刷卡、手机扫码 4.3 inch LCD screen, card swiping, mobile phone code scanning
通讯方式 Communication	以太网WiFi/4G Ethernet/WIFI/4G
桩体尺寸 Size	270mm x 132mm x 362mm (W x D x H)
环境参数 Environmental parameters	
工作温度 Temperature	-30℃~60℃
海拔高度 Altitude	≤ 2000m
相对湿度 Relative Humidity	≤ 95%，无冷凝 Non condensing
噪音级别 Noise Level	≤ 65dB
防护等级 Protection Grade	IP55
参考标准 Reference Standards	GB/T 20234-2015, GB/T 18487.1-2015, NB/T 33002-2018NB/T 33008.2-2018

产品介绍 Introduction
PEVC2107广泛适用于私人停车位、电动汽车制造企业和房地产项目的经济型交流充电桩。内置A型漏电保护空开，对交流和脉动直流漏电进行可靠保护，内置PE接地检测功能，实时检测PE接线可靠性，保护设备用电安全；内置温度检测传感器，控制器通过降流或断电防止充电过程因过温引起的自燃等事故。PEVC2107 is widely applicable to private parking spaces, electric vehicle manufacturing enterprises and real estate. Built-in A-type leakage protection air switch is reliable for protection of AC and pulsating DC leakage, built-in PE grounding detection is capable of real-time detection and protection. Built in temperature detection sensor prevents accidents caused by over temperature.

- 产品特点 Features**
- 32位工业级处理器平台设计；计量精度1.0级 Designed by 32-bit industrial grade processor platform, accuracy level 1.0
 - 非接触式读卡器支持M1卡 Contactless card reader supports M1 cards
 - 支持扫描二维码，可远程实时监控充电状态与预约充电 Supports QR codes, remote real-time monitoring and appointment
 - 后台系统完善，可进行消费行为分析和产品故障定位等 Consumer behaviour analysing and locate product faults detecting
 - 产品具备以太网、WIFI或4G等无线通信方式与后台系统实时通讯 Ethernet/WIFI/4G real-time communication
 - 具备自检功能，故障信息以故障码的形式显示于界面并上传至后台系统 Self checking , fault codes displayed uploaded

✓ 米云国标PEVC2201双枪交流充电桩（3.5 - 7 kW功率等级）
Miyun PEVC2201 AC EV Charger (Double Guns, 3.5-7kW)



基本参数 Basic parameters		
输入电压 Input Voltage	220VAC±20%(50Hz±5Hz)	
输出功率 Output Power	7kW*2 / 3.5kW*2	
输出电压 Output Voltage	220VAC±20%(50Hz±5Hz)	
输出电流 Output Current	32A*2 / 16A*2	
计量精度 Accuracy	1.0	
保护功能 Protection	过压、欠压、过载、急停、过温、漏电 Overvoltage, undervoltage, overload, emergency stop, over temperature, leakage	
人机交互 Interaction	4.3寸液晶屏、刷卡、手机扫码 4.3 inch LCD screen, card swiping, mobile phone code scanning	
通讯方式 Communication	以太网WiFi/4G Ethernet/WIFI/4G	
桩体尺寸 Size	300mm x153.8mm x 420mm (W x D x H)	
环境参数 Environmental parameters		
工作温度 Temperature	-30°C~60°C	
海拔高度 Altitude	≤ 2000m	
相对湿度 Relative Humidity	≤ 95%，无冷凝 Non condensing	
噪音级别 Noise Level	≤ 65dB	
防护等级 Protection Grade	IP55	
参考标准 Reference Standards	GB/T 20234、GB/T 18487.1、NB/T 33002、NB/T 33008.2	

(支持挂墙安装)

⚙️ 产品介绍 Introduction

PEVC2201是一款双枪交流充电桩产品，具有集成度高、占地面积小、简约大方等优点。内置A型漏电保护空开，对交流和脉动直流漏电进行可靠保护，内置PE接地检测功能，实时检测PE接线可靠性，保护设备用电安全；内置温度检测传感器，控制器通过降流或断电防止充电过程因过温引起的自燃等事故。 Dual gun AC Charger with the advantages of high integration, small footprint, simplicity and generosity. Built-in A-type leakage protection air switch is reliable for protection of AC and pulsating DC leakage, built-in PE grounding detection is capable of real-time detection and protection. Built in temperature detection sensor prevents accidents caused by over temperature.

📖 产品特点 Features

- 32位工业级处理器平台设计；计量精度1.0级 Designed by 32-bit industrial grade processor platform, accuracy level 1.0
- 非接触式读卡器支持M1卡 Contactless card reader supports M1 cards
- 支持扫描二维码，可远程实时监控充电状态与预约充电 Supports QR codes, remote real-time monitoring and appointment
- 后台系统完善，可进行消费行为分析和产品故障定位等 Consumer behaviour analysing and locate product faults detecting
- 产品具备以太网、WIFI或4G等无线通信方式与后台系统实时通讯 Ethernet/WIFI/4G real-time communication
- 具备自检功能，故障信息以故障码的形式显示于界面并上传至后台系统 Self checking , fault codes displayed uploaded

✓ 米云国标PEVC3401直流充电桩（30 - 40 kW功率等级）
Miyun PEVC3401 DC EV Charger (SingleGuns, 30-40kW)



输入特性 Input parameters		
输入电压 Input Voltage	380VAC±15%(50Hz±5Hz)	
总谐波畸变率 Harmonic Distortion Rate	≤5%	
功率因数 Power factor	≥0.99	
输出特性 Output parameters		
整机效率 Efficiency	≥95%	
功率段 Power range	30kW	40kW
输出电压 Output Voltage	DC750V(200V-750V) / DC1000V(200V-1000V)	
输出电流 Output Current	75A(Max)	100A(Max)
输出方式 Output	单枪 Single Gun	
输出精度 Output Accuracy	纹波≤1%、稳流± ± 1%、稳压± ± 0.5% Ripple ≤ 1%, stable current ± ± 1%, stable voltage ± ± 0.5%	
BMS电源 Power Supply	DC12V	
基本参数 Basic parameters		
保护功能 Protection	输入过/欠压、输出过流、输出过压、绝缘监测、蓄电池二重保护蓄电池反接、电量校验、输出短路、充电桩过温、充电枪过温、急停、门禁、设备倾斜、浪涌、接地 Input over/under voltage, output over current, output over voltage, insulation monitoring, battery double protection, battery reverse connection, battery verification, output short circuit, charging pile over temperature, charging gun over temperature, emergency stop, access control, equipment tilting, surge, grounding	
人机交互 Interaction	触摸液晶显示屏、刷卡/扫码 Touch LCD screen, swipe card/scan code	
通讯方式 Communication	标配：以太网，选配：4G Standard configuration: Ethernet, optional configuration: 4G	
计量精度 Accuracy	1.0	
其他参数 Other parameters		
桩体尺寸 Size	桩体body: 640*160*550mm(W*D*H) 立柱column: 350*240*1500mm(W*D*H)	
工作温度 Temperature	-20°C~50°C	
海拔高度 Altitude	≤2000m	
相对湿度 Relative Humidity	≤95%无冷凝 Non Condensation	
噪音级别 Noise Level	≤ 65dB	
防护等级 Protection Grade	IP54	
参考标准 Reference Standards	GB/T 18487.1、GB/T 20234、NB/T 33001、NB/T33008.1	

⚙️ 产品介绍 Introduction

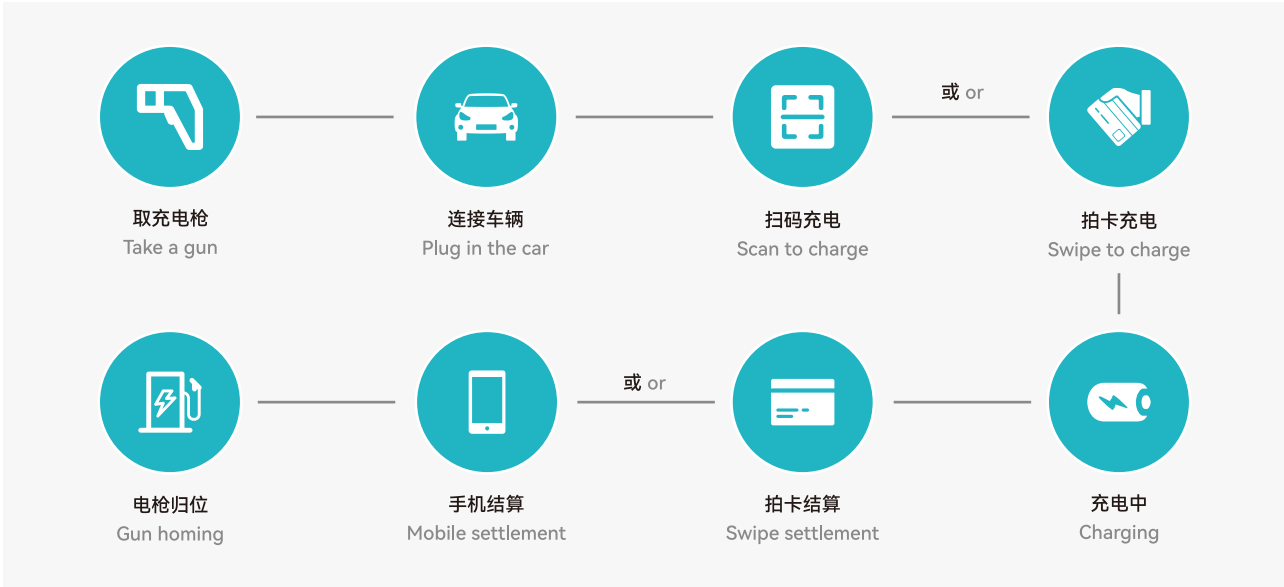
PEVC3401主要适合应用于小型地面、地下车库充电站等场景。系统主要由电源模块、控制单元、通讯单元、保护单元组成，可实现充电启动、运行、监控、停止功能；方便灵活安装。 PEVC3401 is mainly suitable for applications in small ground, underground garage charging stations, and other scenarios. The system consists of a power module, control unit, communication unit, and protection unit. It is capable of initiating charging, operation, monitoring, and stop functions; Convenient and flexible installation.

✓ 米云国标MCEV系列一体式直流双枪充电桩（40 - 80kW功率等级）
Miyun MCEV DC Integrated EV Charger (Double Guns, 40-80kW)

GB



⚙️ 充电流程 Charging Process



输入特性 Input parameters			
输入电压 Input Voltage	380VAC±15%(50Hz±5Hz)		
总谐波畸变率 Harmonic Distortion	≤5%		
功率因数 Power factor	≥0.99		
输出特性 Output parameters			
整机效率 Efficiency	≥94%		
功率段 Power range	30kW	60kW	80kW
输出电压 Output Voltage	750V(200V-750V) 1000V可定制 customizable		
输出方式 Output	单/双枪 Single or Dual Gun	单/双枪 Single or Dual Gun	单/双枪 Single or Dual Gun
输出精度 Output Accuracy	纹波≤1%、稳流≤1%、稳压≤0.5% Ripple ≤ 1%, stable current ≤ 1%, stable voltage ≤ 0.5%		
BMS电源 Power Supply	DC12V或DC12V/DC24V兼容 DC12V or DC12V/DC24V compatible		
基本参数 Basic parameters			
保护功能 Protection	输入过/欠压、输出过流、输出过压、绝缘监测、蓄电池二重保护蓄电池反接、电量校验、输出短路、充电桩过温、充电枪过温、急停、门禁、设备倾斜、浪涌、接地 Input over-voltage/undervoltage, output over-current, output over-voltage, insulation monitoring, battery double protection, battery reverse connection, power verification, output short circuit, Charging station overheating, charging gun overheating, emergency stop, access control, equipment tilt, surge, grounding		
人机交互 Interaction	触摸液晶显示屏、刷卡/扫码 Touch LCD screen, swipe card/scan code		
通讯方式 Communication	标配：以太网，选配：4G Standard configuration: Ethernet, optional configuration: 4G		
计量精度 Accuracy	1.0		
其他参数 Other parameters			
桩体尺寸 Size	700×240×1750mm (W×D×H)		
工作温度 Temperature	-20°C~50°C		
海拔高度 Altitude	≤2000m		
相对湿度 Relative Humidity	≤95%,无冷凝 Non Condensation		
噪音级别 Noise Level	≤ 65dB		
防护等级 Protection Grade	IP54		
参考标准 Reference Standards	GB/T 18487.1、GB/T 20234、NB/T 33001、NB/T 33008.1		

✓ 米云国标MCEV系列一体式直流双枪充电桩（120 - 160kW功率等级）
Miyun MCEV DC Integrated EV Charger (Double Guns, 120-160kW)

GB



⚙️ 充电流程 Charging Process

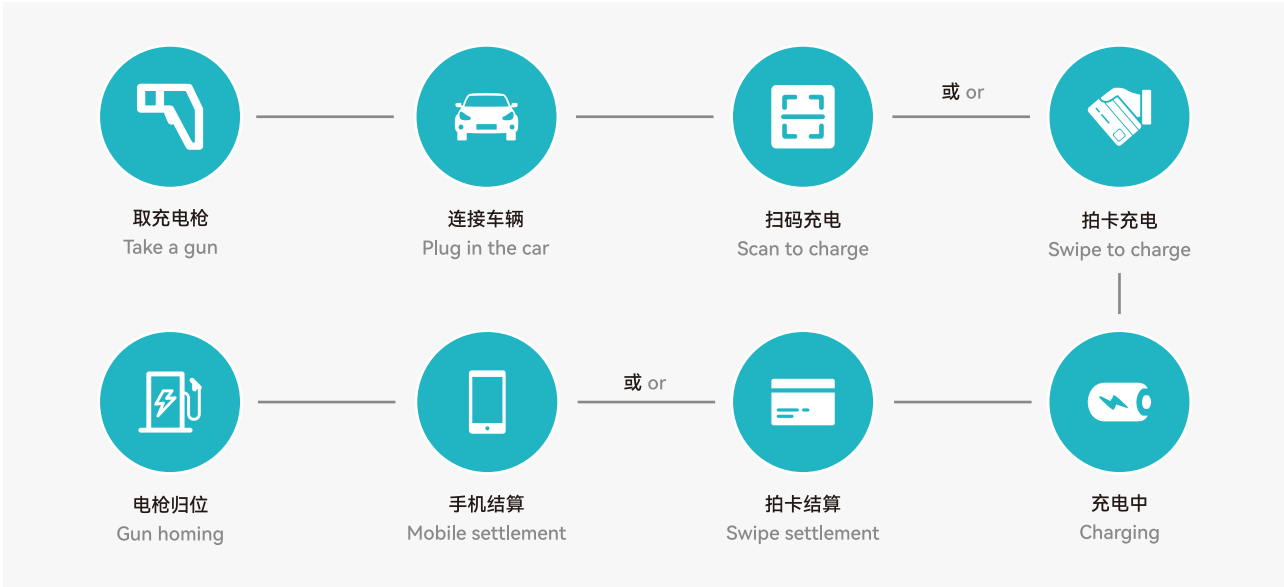


输入特性 Input parameters		
输入电压 Input Voltage	380VAC±15%(50Hz±5Hz)	
总谐波畸变率 Harmonic Distortion	≤5%	
功率因数 Power factor	≥0.99	
输出特性 Output parameters		
整机效率 Efficiency	≥94%	
功率段 Power range	120kW	160kW
输出电压 Output Voltage	200V-750V / 200V-1000V	
输出方式 Output	单/双枪 Single or Dual Gun	
输出精度 Output Accuracy	纹波≤1%、稳流≤1%、稳压≤0.5% Ripple ≤ 1%, stable current ≤ 1%, stable voltage ≤ 0.5%	
BMS电源 Power Supply	DC12V/DC24V兼容 DC12V/DC24V compatible	
基本参数 Basic parameters		
保护功能 Protection	输入过/欠压、输出过流、输出过压、绝缘监测、蓄电池二重保护蓄电池反接、电量校验、输出短路、充电桩过温、充电枪过温、急停、门禁、设备倾斜、浪涌、接地 Input over-voltage/undervoltage, output over-current, output over-voltage, insulation monitoring, battery double protection, battery reverse connection, power verification, output short circuit, Charging station overheating, charging gun overheating, emergency stop, access control, equipment tilt, surge, grounding	
人机交互 Interaction	触摸液晶显示屏、刷卡/扫码 Touch LCD screen, swipe card/scan code	
通讯方式 Communication	标配：以太网，选配：4G Standard configuration: Ethernet, optional configuration: 4G	
计量精度 Accuracy	1.0	
其他参数 Other parameters		
桩体尺寸 Size	700*550*1800mm(W*D*H)	
工作温度 Temperature	-20°C~50°C	
海拔高度 Altitude	≤2000m	
相对湿度 Relative Humidity	≤95%,无冷凝 Non Condensation	
噪音级别 Noise Level	≤ 65dB	
防护等级 Protection Grade	IP54	
参考标准 Reference Standards	GB/T 18487.1-2015、GB/T 20234-2015、NBT 33001-2018NBT 33008.1-2018	

✓ 米云国标MCEV系列一体式直流双枪充电桩（180 - 400kW功率等级）
Miyun MCEV DC Integrated EV Charger (Double Guns, 180-400kW)



⚙️ 充电流程 Charging Process



输入特性 Input parameters	
输入电压 Input Voltage	380VAC±15%(50Hz±5Hz)
总谐波畸变率 Harmonic Distortion	≤5%
功率因数 Power factor	≥0.99
输出特性 Output parameters	
整机效率 Efficiency	≥94%
功率段 Power range	180 - 400kW
输出电流 Output Current	单枪最大 (Single max) : 250A
输出方式 Output	单/双枪 Single or Dual Gun
输出精度 Output Accuracy	纹波≤1%、稳流≤1%、稳压≤0.5% Ripple ≤ 1%, stable current ≤ 1%, stable voltage ≤ 0.5%
BMS电源 Power Supply	DC12V/DC24V兼容 DC12V/DC24V compatible
基本参数 Basic parameters	
保护功能 Protection	输入过/欠压、输出过流、输出过压、绝缘监测、蓄电池二重保护蓄电池反接、电量校验、输出短路、充电桩过温、充电枪过温、急停、门禁、设备倾斜、浪涌、接地 Input over-voltage/undervoltage, output over-current, output over-voltage, insulation monitoring, battery double protection, battery reverse connection, power verification, output short circuit, Charging station overheating, charging gun overheating, emergency stop, access control, equipment tilt, surge, grounding
人机交互 Interaction	触摸液晶显示屏、刷卡/扫码 Touch LCD screen, swipe card/scan code
通讯方式 Communication	标配: 以太网, 选配: 4G Standard configuration: Ethernet, optional configuration: 4G
计量精度 Accuracy	1.0
其他参数 Other parameters	
桩体尺寸 Size	750*750*1900mm(W*D*H)
工作温度 Temperature	-20°C~50°C
海拔高度 Altitude	≤2000m
相对湿度 Relative Humidity	≤95%,无冷凝 Non Condensation
噪音级别 Noise Level	≤ 65dB
防护等级 Protection Grade	IP54
参考标准 Reference Standards	GB/T 18487.1、GB/T 20234、NB/T 33001、NB/T 33008.1

✓ 米云国标PEVC3302分体式直流充电桩

Miyun PEVC3302 DC Split Type EV Charger

GB



⚙ 整流柜基本参数 Basic Parameters of Rectifier Cabinet

输入特性 Input parameters	输入电压 Input Voltage	380VAC±15%(50Hz±5Hz)
	总谐波畸变率 Harmonic Distortion	≤5%
	功率因数 Power factor	≥0.99
	输入路数 Input Channels	2
	整机效率 Efficiency	≥94%
输出特性 Output parameters	功率段 Power range	180 - 400kW
	最大输出端口数 Max Output Ports	8
	模块数量 Modules	24
	输出电压 Output Voltage	200VDC~750VDC (可定制1000VDC Customizable)
基本参数 Basic parameters	保护功能 Protection	输入过/欠压、输出过流、输出过压、绝缘监测、输出短路、充电桩过温 Input over-voltage/undervoltage, output over-current, output over-voltage, insulation monitoring, output short circuit, Charging station overheating
	冷却方式 Cooling Way	强制风冷 Forced air cooling
	功率分配 Power Allocation	全动态柔性分配 Fully dynamic flexible allocation
	其他 Others	手动急停, 状态指示灯, 门禁, 照明检测, 防雷, 自检等 Manual emergency stop, status indicator light, access control, lighting detection, lightning protection, self inspection, etc
其他参数 Other parameters	桩体尺寸 Size	1200*850*2000mm(W*D*H)
	工作温度 Temperature	-20°C~50°C
	海拔高度 Altitude	≤2000m
	相对湿度 Relative Humidity	≤95%,无冷凝 Non Condensation
	噪音级别 Noise Level	≤ 65dB
	防护等级 Protection Grade	IP54
参考标准 Reference Standards		GB/T 18487.1、GB/T 20234、NB/T 33001

⚙ 充电桩基本参数 Basic Parameters of Chargers

输入特性 Input parameters	
输入电压 Input Voltage	200VAC, 200VDC~750VDC (可定制1000VDC customizable)
输入路数 Input Channels	1/2
输出特性 Output parameters	
单枪最大输出功率 Maximum Power	180kW
单枪最大输出电流 Maximum Current	250A(1)
输出电压 Output Voltage	200VDC~750VDC (可定制1000VDC customizable)
输出端口数 Outputs	1/2
输出精度 Output Accuracy	纹波≤1%、稳流≤1%、稳压≤0.5% Ripple ≤ 1%, stable current ≤ 1%, stable voltage ≤ 0.5%
BMS电源 Power Supply	DC12V/DC24V
基本参数 Basic parameters	
保护功能 Protection	漏电保护、输出过压、输出过流、绝缘监测、过充保护、接地保护、电量校验、极性反接、输出短路、充电桩过温、充电桩过温、蓄电池二重保护 Leakage, output overvoltage, output overcurrent, insulation monitoring, overcharging, grounding, battery verification, polarity reversal, output short circuit, charging pile over temperature, charging gun over temperature, and battery double
人机交互 Interaction	7寸触摸屏液晶显示屏、刷卡/扫码 7 Inch Touch LCD screen, swipe card/scan code
通讯方式 Communication	标配: 以太网, 选配: 4G Standard configuration: Ethernet, optional configuration: 4G
其他参数 Other parameters	
桩体尺寸 Size	450(W)x200(D)x1450(H)mm
工作温度 Temperature	-20°C~50°C
海拔高度 Altitude	≤2000m
相对湿度 Relative Humidity	≤95%,无冷凝 Non Condensation
噪音级别 Noise Level	≤ 65dB
防护等级 Protection Grade	IP55
参考标准 Reference Standards	GB/T 18487.1、GB/T 20234、NB/T 33001

✓ 米云欧标MEVC2203交流充电桩（7 - 22kW功率等级）
Miyun MEVC2203 AC EV Charger (Single Gun, 7~22kW)



Introduction
MEVC2203 series charging pile are single-phase, three-phase AC charging piles which has passed CE certification. The shell is made of ABS+PC hybrid material with good weather resistance and excellent flame retardant performance. It has various detection functions, comprehensive protection for users and equipment. The output power can be selected in three modes: 7kW, 11kW, 22kW. they support W1F1, Bluetooth, Ethernet, 4G, and multiple communication modes.

Features

Module Design

Easy Installation

All-round Protection

Minimalist Design

Reliable Quality

Double short circuit Protection

Lightning Protection

Ground Fault Detection

Multiple Communication Modes

IP55 Protection Class

Parameter type	Description	MEVC2203E(U)	
INPUT	Rated Voltage	230VAC±10%	400VAC±10%
	Frequency	50Hz / 60Hz	
	Power Supply	1P+N+PE	3P+N+PE
OUTPUT	Output Power	7kW	11kW/22kW
	Output Current	32A	16A/32A
	Output Voltage	230VAC±10%	400VAC±10%
	Connection	Plug	
	Cable Length	5 metres	
	Number of Ports	1	
Protection Functions	Over/Under Voltage	YES	
	Over/Short Curret	YES	
	Over/Under Temperature	YES	
	Lightning	YES	
	Ground	YES	
	Slant Power	YES	
Safety	Leakage	Type A + DC 6mA Protection	
	Ingress	IP55	
	Impact	Ik08	
	Certification	CE	
	Certification Standard	IEC61851-1/IEC62196-1/2	
Environmental Parameters	Oprating Temperature	-30°C~60°C	
	Storage Temperature	-40°C~80°C	
	Work Altitude	≤2000m	
	Work Humidity	≤95% non condensation	
Communication	WIFI	YES	
	Ethernet	Optional	
	4G	Optional	
	OCPP	OCPP1.6(JSON)	
	Start Mode	Plug/RFID/APP	
Basic Patameters	HMI	4.3 Inch LCD	
	Connector Type	Type 2	
	Shell Color	Metallic Grey	
	Shell Material	(ABC+PC)-Blend	
Package	Installation Method	Wall-mount/Pole-mount	
	Product Pimension	300mm * 154mm * 420mm (W*D*H)	
	External Package	Carton	

✓ 米云欧标MEVC0323直流充电桩（30 - 40kW功率等级）
Miyun MEVC0323 DC EV Charger (Single Gun, 30-40kW)



Introduction
MEVC0323 series products are the first choice when choosing low-power DC charging piles. They have passed CE certification and support 30kW~40kW output. They have the advantages of small size, convenient installation and reliable performance. They are suitable for indoor and outdoor usage. Supporting Wall-mounted or column-mounted installations.

Features

Module Design

Easy Installation

All-round Protection

Minimalist Design

Reliable Quality

Double short circuit Protection

Lightning Protection

Ground Fault Detection

Multiple Communication Modes

IP55 Protection Class


Parameter type	Description	MEVC0323E(U)
Input	Rated Voltage	400VAC±15%
	Power Supply	3P+N+PE
	Frequency	≥ 95%
	Power Factor	≥ 0.98
	THDi	≤ 5%
Output	Connector Type	CCS Combo 1/CCS Combo 2
	Output Voltage	150-1000VDC
	Max Current	100A
	Power Rating	30-40kW
	Voltage Accuracy	≤ 0.5%
	Current Accuracy	≤ ±1%
General	HMI	4.3 Inch LCD Touch Screen
	Payment Method	RFID Card/APP
	Cable Length	5 m
	Network Connection	Cellular Modem: 4G Lan: 10/100 Base-T Ethernet
	Communication Protocol	OCPP 1.6J
	Operating Noise Level	≤ 60dBA
	Ingress Rating	IP 55
	IK Rating	IK 10
	Power Meter	Accuracy Class 1.0
	Enclosure	Galvanized Steel
	Place of Installation	Indoor / Outdoor
	Product Pimention	Body: 640mm * 160mm * 550mm (W*D*H) Column: 350mm * 240mm * 1500mm (W*D*H)
	Package Pimention	808mm * 748mm * 438mm (W*D*H)
	Protection Functions	Over Current, Under Voltage, Over Voltage, Short Circuit, Residual Current, Surge Protection, Over Temperature, Ground Protection
Environmental Parameters	Certification Standard	EN/IEC 61851-1, EN/IEC 61851-23, EN/IEC61851-24, IEC62196-1, IEC62196-3
	Oprating Temperature	-30°C~50°C
	Storage Temperature	-40°C~75°C
	Work Altitude	≤2000m
	Operating Humidity	5%~95% RH

✓ 米云欧标MEVC0323直流充电桩（60 - 160kW功率等级）
Miyun MEVC0323 DC EV Charger (Double Guns, 60-160kW)




Introduction
It is designed for quick charging in both public and private locations. MEVC0323 has the advantage of easy installation. The ground-mounted design and pluggable power modules allow for flexible installation. MEVC0323 also features network communication capability; It is able to connect with remote network systems and provide drivers of electric cars real-time information. MEVC0323 has a friendly user interface with HMI, a power supply safety system and excellent waterproof and dustproof technology to provide the best choice for outdoor environments.


Features




Module Design




Easy Installation




All-round Protection




Minimalist Design




Reliable Quality




Double short circuit Protection




Lightning Protection



Ground Fault Detection



Multiple Communication Modes



IP55 Protection Class

Parameter Type	Description	MEVC0323				
Input	Power Supply	3P+N+PE				
	Rated Voltage	400VAC±10%				
	Frequency	50/60Hz				
	THDI	≤5%				
	Efficiency	≥95%				
	Power Factor	≥0.98				
Output	Connector Type	CCS Combo 1/CCS Combo 2				
	Voltage	150-750VDC/150-1000VDC(Customized)				
	Power Rating	60kW	80kW	120kW	160kW	
	Max Current	150A max (1)	200A max (1)			
	Voltage Accuracy	≤0.5%				
	Current Accuracy	≤±1%				
General	HMI	7-inch Touchscreen				
	Payment Method	RFID Card, APP				
	Cable Length	5m				
	Network Connection	Cellular Modem: 4G/LAN: 10/100 Base-T Ethernet				
	Communication Protocol	OCPP 1.6J				
	Operating Noise Level	≤75dB				
	Ingress Rating	IP55				
	IK Rating	IK10				
	Power Meter	Accuracy Class 1.0 Energy Meter				
	Enclosure	Galvanized Steel-power, power coating RAL7035				
	Place of Installation	Indoor/Outdoor				
	Product Dimension(w*d*h)	700*550*1800mm				
	Package Dimension(w*d*h)	950*720*1950mm				
	Protection	Over Current, Under Voltage, Over Voltage, Short Circuit,Residual Current, Surge Protection, Over Temperature, Ground Protection				
	Certification Standard	EN/IEC 61851-1, EN/IEC 61851-23, EN/IEC 61851-24 IEC 62196-1, IEC 62196-3				
	Environmental	Operating Temperature	—30℃~+55℃			
Storage Temperature		—40℃~+75℃				
Maximum Installation Height		≤2000m				
Operating Humidity		5%~95% RH				

✓ 米云欧标MEVC0323直流充电桩（180 - 240kW功率等级）
Miyun MEVC0323 DC EV Charger (Double Guns, 180-240kW)



Introduction
It is designed for quick charging in both public and private locations. MEVC0323 has the advantage of easy installation. The ground-mounted design and pluggable power modules allow for flexible installation. MEVC0323 also features network communication capability; It is able to connect with remote network systems and provide drivers of electric cars real-time information. MEVC0323 has a friendly user interface with HMI, a power supply safety system and excellent waterproof and dustproof technology to provide the best choice for outdoor environments.

Features

Module Design

Easy Installation

All-round Protection

Minimalist Design

Reliable Quality

Double short circuit Protection

Lightning Protection

Ground Fault Detection

Multiple Communication Modes

IP55 Protection Class

Parameter Type	Description	MEVC0323	
Input	Power Supply	3P+N+PE	
	Rated Voltage	400VAC±10%	
	Frequency	50/60Hz	
	THDI	≤5%	
	Efficiency	≥95%	
	Power Factor	≥0.98	
Output	Connector Type	CCS2 or CCS2 + CCS2 or CCS2 + JAP	
	Voltage	200 A MAX (1)	
	Power Rating	180kW	240kW
	Max Current	200A max (1)	
	Voltage Accuracy	≤0.5%	
	Current Accuracy	≤±1%	
General	HMI	7-inch Touchscreen	
	Payment Method	RFID Card, APP	
	Cable Length	5m	
	Network Connection	Cellular Modem: 4G/LAN: 10/100 Base-T Ethernet	
	Communication Protocol	OCPP 1.6J	
	Operating Noise Level	≤75dB	
	Ingress Rating	IP55	
	IK Rating	IK10	
	Power Meter	Accuracy Class 1.0 Energy Meter	
	Enclosure	Galvanized Steel, Surface Sprayed with Anti-Corrosion Paint	
	Place of Installation	Indoor/Outdoor	
	Product Dimension(w*d*h)	750*750*1900mm	
Environmental	Package Dimension(w*d*h)	1000*920*2050mm	
	Protection	Over Current, Under Voltage, Over Voltage, Short Circuit,Residual Curre Protection, Over Temperature, Ground Protection	
	Certification Standard	EN/IEC 61851-1, EN/IEC 61851-23, EN/IEC 61851-24 IEC 62196-1, IEC 62196-3	
	Operating Temperature	-30℃~+50℃	
	Storage Temperature	-40℃~+75℃	
	Maximum Installation Height	≤2000m	
	Operating Humidity	5%~95% RH	

Certifications and Qualifications





2022年6月，发起成立珠海市新能源充电设施协会成立

June 2022, the Zhuhai New Energy Charging Facilities Association was established



肖彩雯董事长荣获联合国环保基金会授予杰出环保领军人物
Chairwoman Xiao Caiwen awarded Outstanding Environmental Leader
by the United Nations Environmental Protection Foundation

特別 報道 2023年2月24日 星期五 香港商報 Hong Kong Commercial Daily http://www.hktd.com A3

2022 綠色亞太傑出環保領軍人物肖彩雯

巾幗之力引領大灣區綠色產業 「米岐」充電站助力「雙碳」戰略

2月23日晚，「2022綠色亞太環保成就獎頒獎禮」在深舉行，在頒獎典禮上，來自珠海的珠海市新能源充電設施協會會長、珠海米岐新能源科技有限公司和岐關新能汽車科技（廣東）有限公司董事長肖彩雯女士獲得「2022綠色亞太環保領軍人物」獎項，成為珠海唯一獲此榮譽的企業家。也是亞太地區新能源充電設施行業發展的重要領軍人物。

肖彩雯從2015年起涉足新能源製造行業，其公司是一家集研發、生產、銷售、充電站運營服務於一體的國家級高新技術企業。公司生產的米岐充電設備遠銷香港、澳門、「一帶一路」沿線及亞洲、歐洲等數十個國家和地區。肖彩雯創建的「米岐」品牌5G超級充電站深得行業認可，引領行業發展，進一步推動了大灣區綠色出行的便利性和智慧度。她憑藉不凡的才幹和對綠色產業的熱愛，是中國綠色產業發展的重要推動者。她不僅致力於推動粵港澳大灣區新能源汽車充電基礎設施的建設，還積極推動制定中國新能源汽車充電行業的產業標準，努力致力於「雙碳」戰略目標的實現。

陳曉蘭 梁易成

身兼多職的優秀商業領袖 巾幗之力奉獻綠色產業

粵港澳大灣區是國家發展的重要引擎，也是中國經濟騰飛的新舞臺。在粵港澳大灣區建設中，綠色產業的發展至關重要。肖彩雯作為一位優秀的商業領袖，她身兼多職，在推動綠色產業發展方面做出了卓越貢獻。

肖彩雯是米岐新能源科技有限公司和岐關新能汽車科技（廣東）有限公司的董事長。她帶領公司研發出具有自主知識產權的米岐5G超級充電站，該充電站具有充電快、效率高、安全可靠等特點，已成為大灣區綠色出行的重要支撐。

除了在公司的工作，肖彩雯還積極參與社會公益事業。她擔任了多個社會職務，包括珠海市新能源充電設施協會會長等。她致力於推動綠色出行，促進粵港澳大灣區的可持續發展。

肖彩雯表示，她將繼續秉承「綠色、環保、科技」的宗旨，為推動粵港澳大灣區綠色產業發展貢獻力量。

創建珠海首個「5G+充電樁」 「米岐」充電站助力港珠澳綠色發展

在粵港澳大灣區建設中，綠色產業的發展至關重要。肖彩雯作為一位優秀的商業領袖，她身兼多職，在推動綠色產業發展方面做出了卓越貢獻。

肖彩雯是米岐新能源科技有限公司和岐關新能汽車科技（廣東）有限公司的董事長。她帶領公司研發出具有自主知識產權的米岐5G超級充電站，該充電站具有充電快、效率高、安全可靠等特點，已成為大灣區綠色出行的重要支撐。

除了在公司的工作，肖彩雯還積極參與社會公益事業。她擔任了多個社會職務，包括珠海市新能源充電設施協會會長等。她致力於推動綠色出行，促進粵港澳大灣區的可持續發展。

肖彩雯表示，她將繼續秉承「綠色、環保、科技」的宗旨，為推動粵港澳大灣區綠色產業發展貢獻力量。

24小時開放的紅色驛站 為司機打造溫馨之家

在粵港澳大灣區建設中，綠色產業的發展至關重要。肖彩雯作為一位優秀的商業領袖，她身兼多職，在推動綠色產業發展方面做出了卓越貢獻。

肖彩雯是米岐新能源科技有限公司和岐關新能汽車科技（廣東）有限公司的董事長。她帶領公司研發出具有自主知識產權的米岐5G超級充電站，該充電站具有充電快、效率高、安全可靠等特點，已成為大灣區綠色出行的重要支撐。

除了在公司的工作，肖彩雯還積極參與社會公益事業。她擔任了多個社會職務，包括珠海市新能源充電設施協會會長等。她致力於推動綠色出行，促進粵港澳大灣區的可持續發展。

肖彩雯表示，她將繼續秉承「綠色、環保、科技」的宗旨，為推動粵港澳大灣區綠色產業發展貢獻力量。

服務深得澳門市場認可 冀將技術經驗推向香港

在粵港澳大灣區建設中，綠色產業的發展至關重要。肖彩雯作為一位優秀的商業領袖，她身兼多職，在推動綠色產業發展方面做出了卓越貢獻。

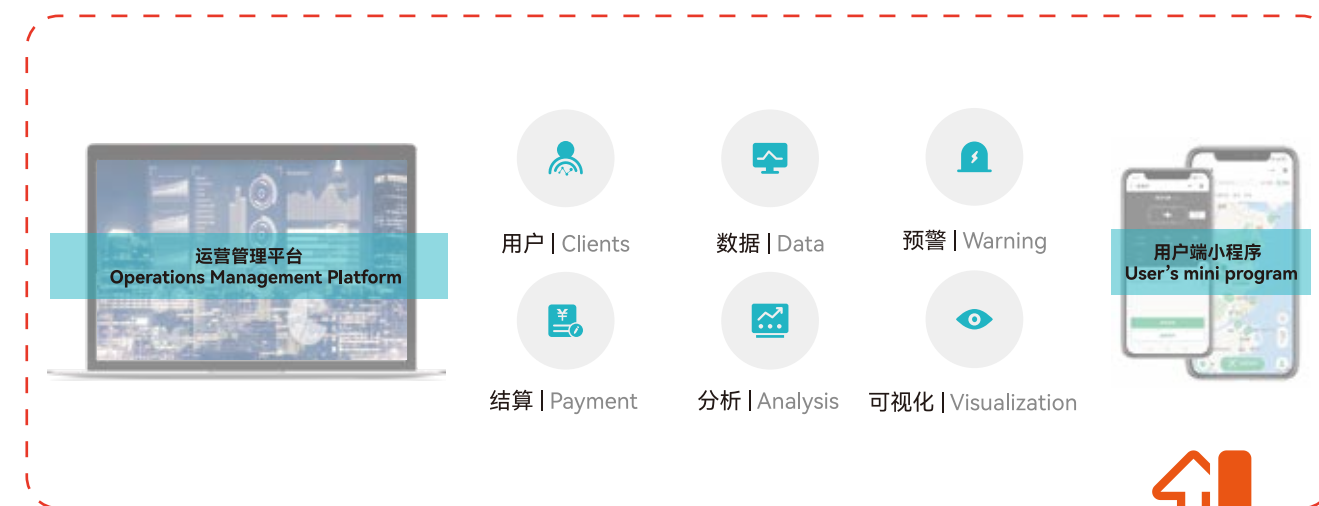
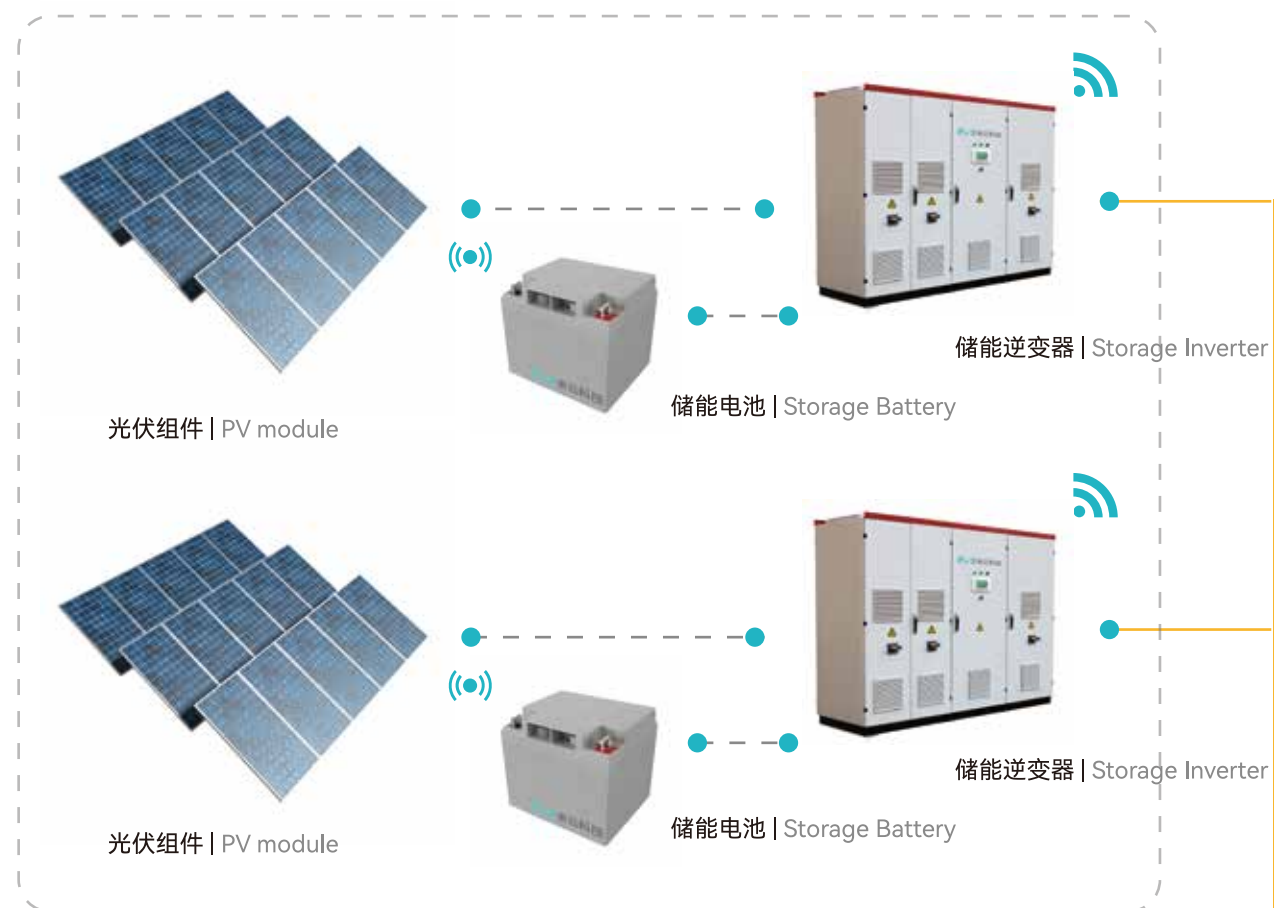
肖彩雯是米岐新能源科技有限公司和岐關新能汽車科技（廣東）有限公司的董事長。她帶領公司研發出具有自主知識產權的米岐5G超級充電站，該充電站具有充電快、效率高、安全可靠等特點，已成為大灣區綠色出行的重要支撐。

除了在公司的工作，肖彩雯還積極參與社會公益事業。她擔任了多個社會職務，包括珠海市新能源充電設施協會會長等。她致力於推動綠色出行，促進粵港澳大灣區的可持續發展。

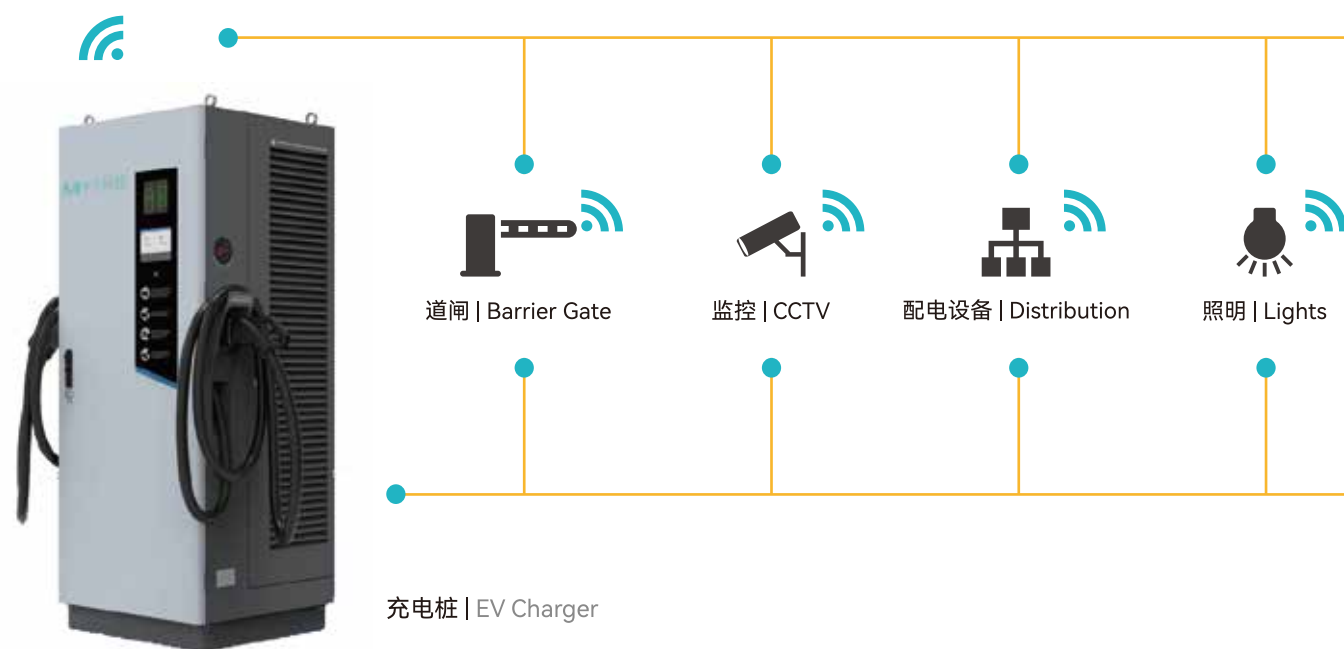
肖彩雯表示，她將繼續秉承「綠色、環保、科技」的宗旨，為推動粵港澳大灣區綠色產業發展貢獻力量。

米云光储充一体化充电场站解决方案

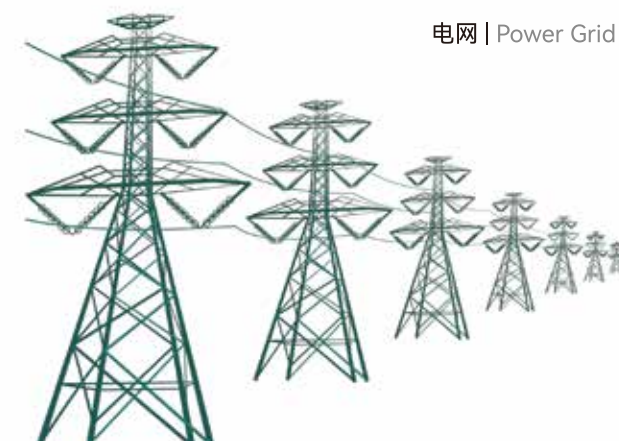
Miyun Integrated Charging Station Solution for Solar Storage and Charging



光伏配电箱 | Photovoltaic Distribution Box



并网接入柜 | Grid Connected Access Cabinet



电网 | Power Grid

应用场景及解决方案

Application Scenarios and Solutions



公交或场站
Bus & Specific Stations

住宅小区
Residential Districts

商业综合体
Commercial Complexes



企事业单位
Enterprises and Institutions

新能源车企
EV Enterprises

景区景点
Tourist Attractions

服务能力

Service Capabilities



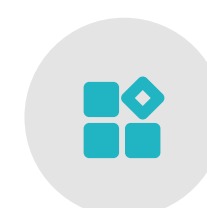
安全服务
Safety Service



智慧物联
Smart IoT



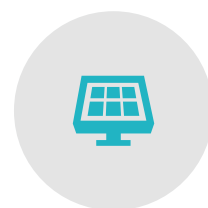
5G智能
Smart 5G



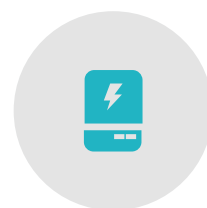
智能运维
Operation Intelligence



米云驿站
Miyun Stage



光储充一体
Solar Storage & Charge



有序充电
Orderly Charging



环境监测
Environmental Monitoring



广告合作
Advertising Co-operation



大数据分析
Big Data Analysis

米云充电场站项目案例

Miyun Charging Station Cases

✓ 出租车5G充电站

Taxis 5G Charging Station



✓ 旅游及通勤大巴5G充电站

Tourism and Commuter Bus 5G Charging Sation



✓ 私家车及网约车充电站
Private Car and Ride Hailing Charging Station



✓ 珠澳通勤大巴充电站
Zhuhai Macau Commuter Bus Charging Station



米云充电合作项目案例

Miyun Charging Cooperation Project Cases

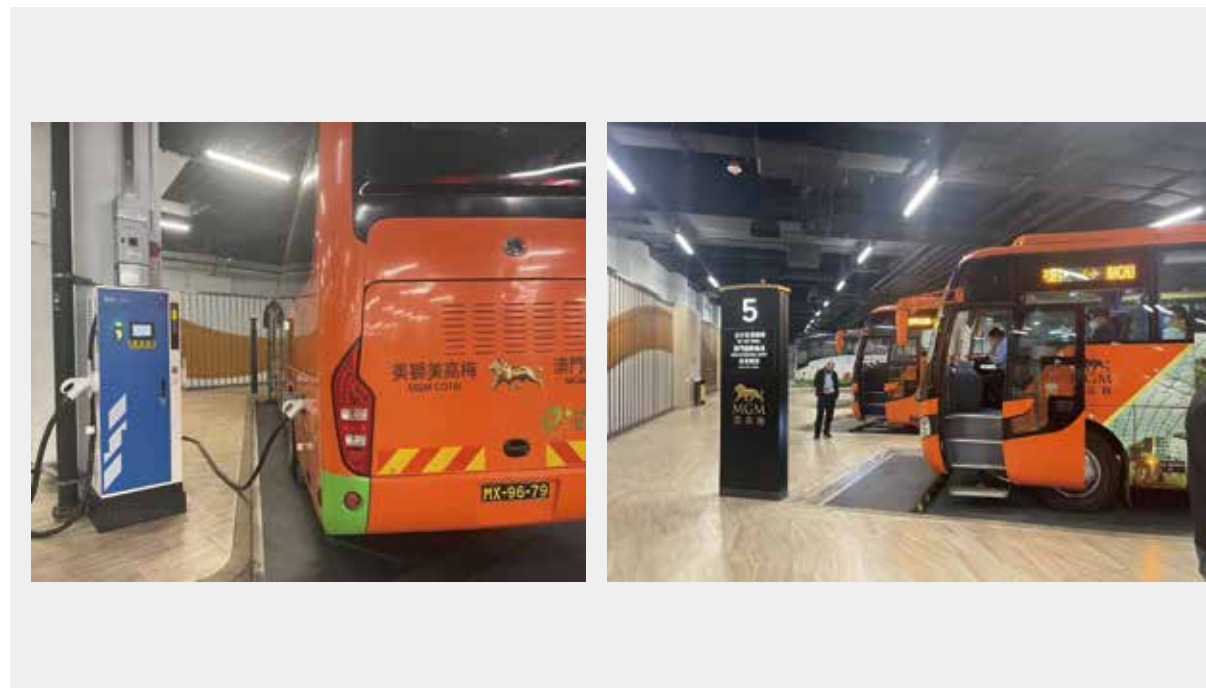
- ✓ 澳门信德集团充电站
SHUN TAK HOLDINGS Charging Station



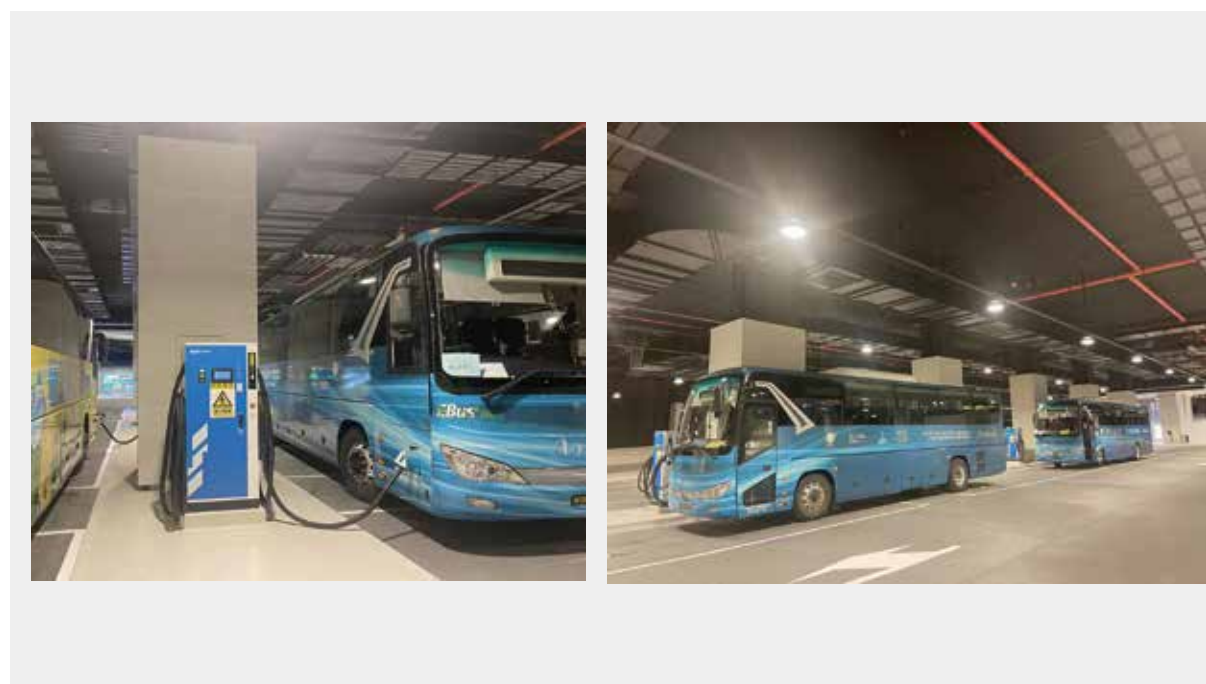
- ✓ 物流货运充电站
Logistics Freight Charging Station



- ✓ 澳门美狮美高梅充电站
Charging Station of MGM Macau



- ✓ 澳门新濠影汇充电站
Charging Station of Melco-Resorts Macau



✓ 部分充电桩出口合作项目
Charging Station Export Projects (Parts of)



哈萨克斯坦公交项目 | Public Transport Project, Kazakhstan



阿联酋迪拜公交项目

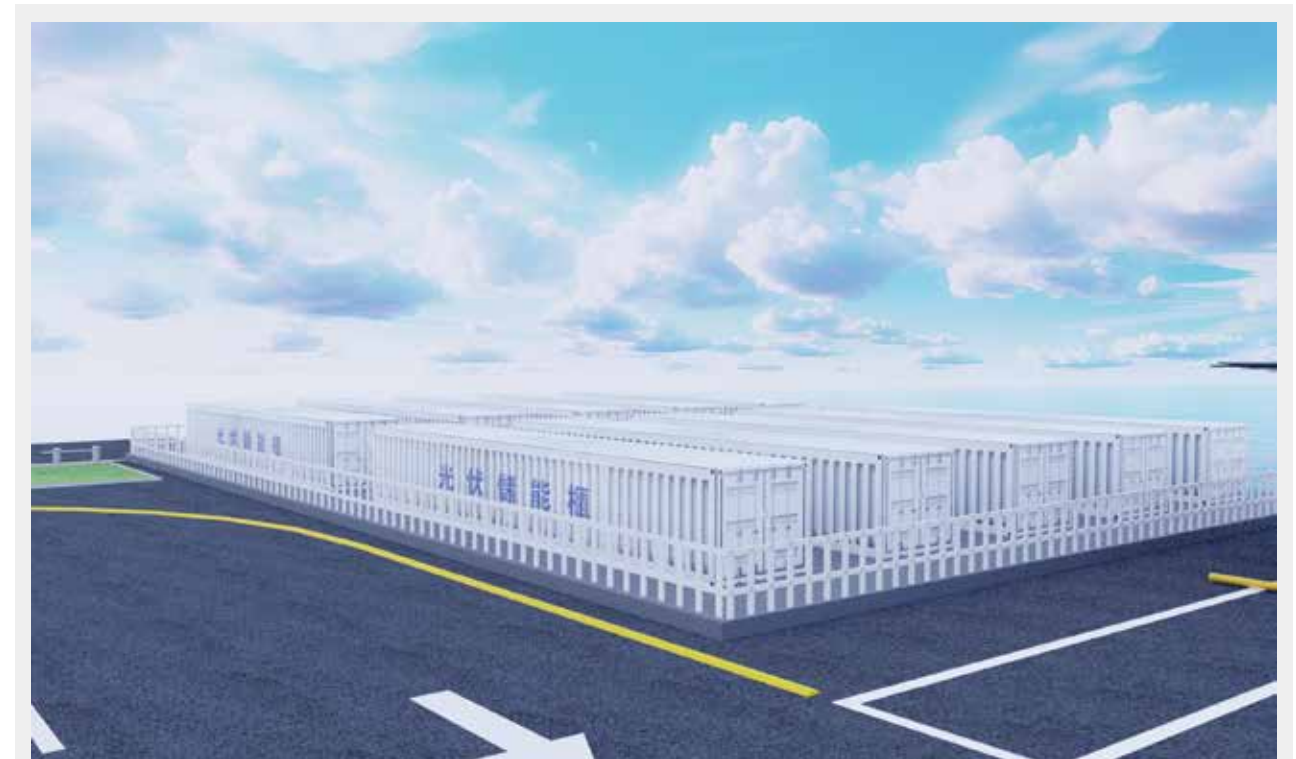
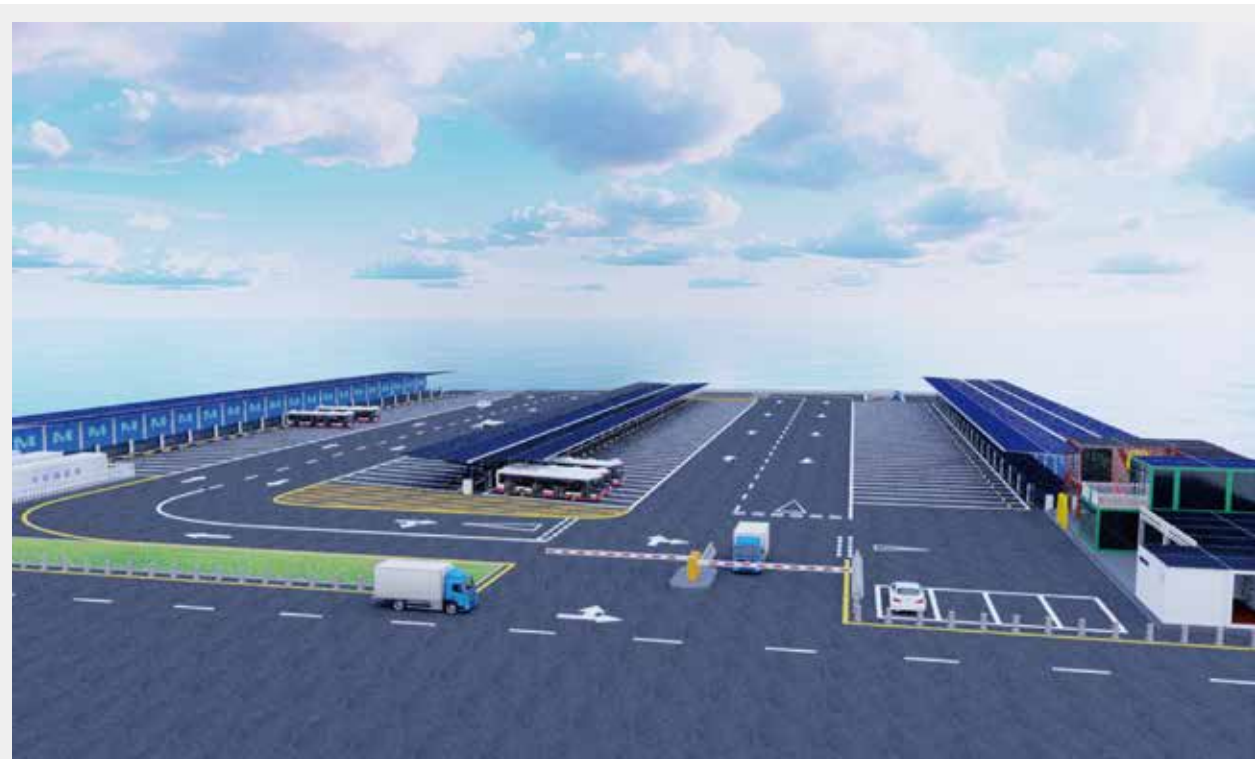


Dubai Project, United Arab Emirates



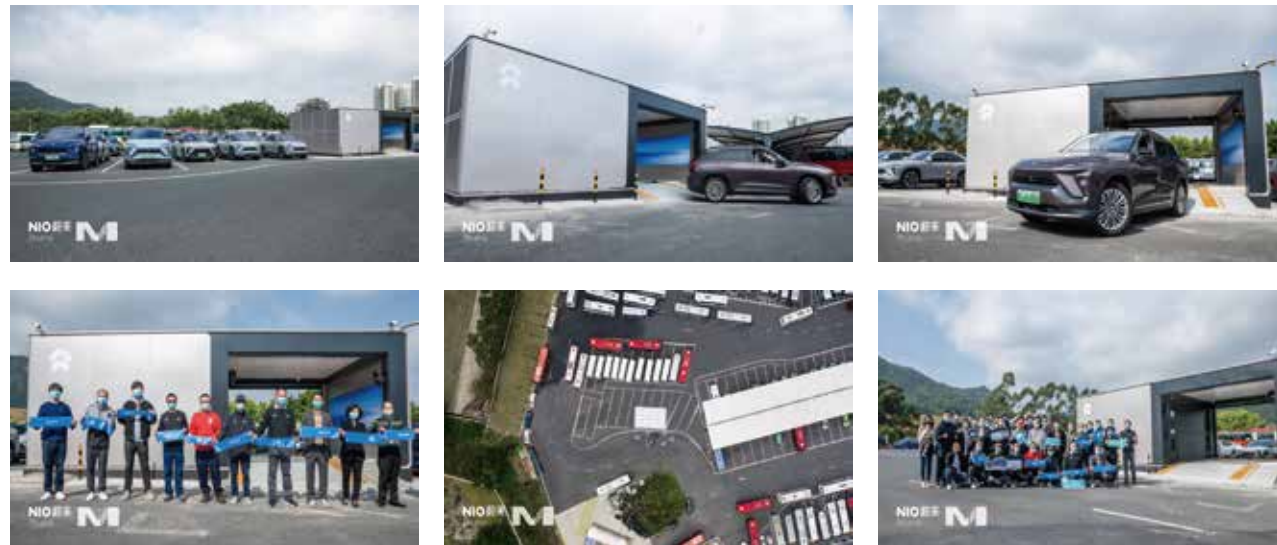
香港凯力新能源项目 | HELIOS HK

✓ 光储充检一体化超级充电站
Integrated Super Charging Station of Solar storage, charging and Inspection

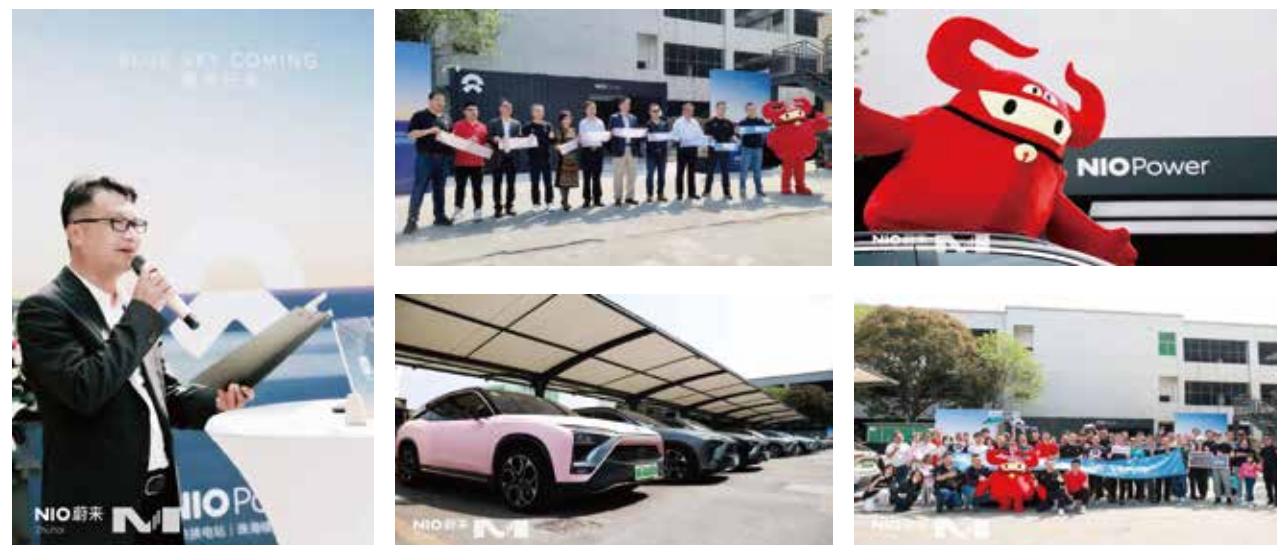


蔚来战略合作项目

NIO Strategic Cooperation Project



蔚来新能源电车第二代换电站（米岐南湾5G超级充电示范站）| NIO New Energy Tram Second Generation Replacement Power Station



蔚来新能源电车第1代换电站（米岐前山5G超级充电示范站）| NIO New Energy Tram First Generation Replacement Power Station

珠海米云新能源科技有限公司

以桩联世界为愿景，
推动新能源汽车的普及，
为全人类创造一个绿色、智慧、可持续发展的居住环境，
为实现全人类居住环境提供一个绿色美好的家园做贡献。

With the vision of Charging the World with connected EV chargers,
we aim to promote the popularization of new energy vehicles
and help creating a green, intelligent, and sustainable living environment for all humanity,
Going further,
contributing to a green and beautiful home for mankind.

CHARGING THE WORLD